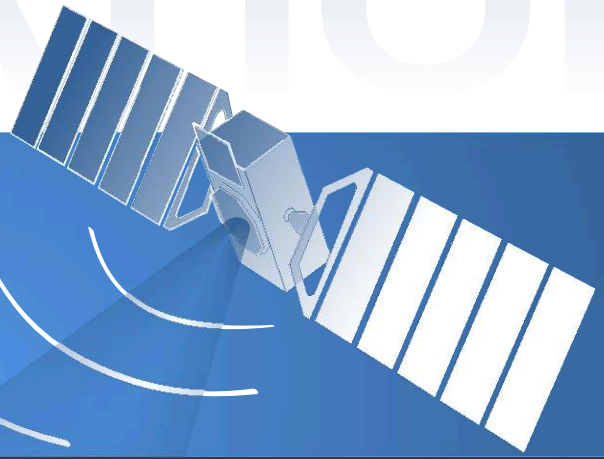


URBAN ASSIST



Galileo / EGNOS

Enhanced

Driver Assistance

# GENEVA

## Invitation Final Demonstration Event

22. November 2011  
Wolfsburg / Germany

**GENEVA** develops an innovative application within the context of advanced driver assistance for high precision, reliable, and certifiable use. The application will contribute to the adoption of the European Geostationary Navigation Overlay Service, **EGNOS**, and the introduction of the European global navigation satellite system, **Galileo**, in one of the most important market segments, i.e., the European automotive industry.

**GENEVA** in particular addresses two specific intersection scenarios to demonstrate collision avoidance: the left turn assistance, where the driver is informed about oncoming traffic; and the stop-line assistance, when the traffic light indicates 'stop'. Satellite navigation, environment perception, and the underlying digital maps are important elements in the system architecture to meet the requirements of the targeted advanced driver assistance application.

[www.geneva-fp7.eu](http://www.geneva-fp7.eu)



The research leading to the results of the GENEVA project has received funding from the European Union Seventh Framework Programme (FP7/2007-2013) under grant agreement no°248198 of the European GNSS Supervisory Authority.



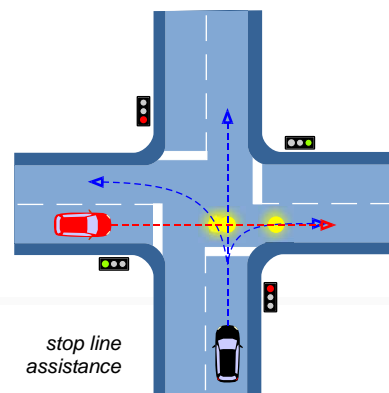
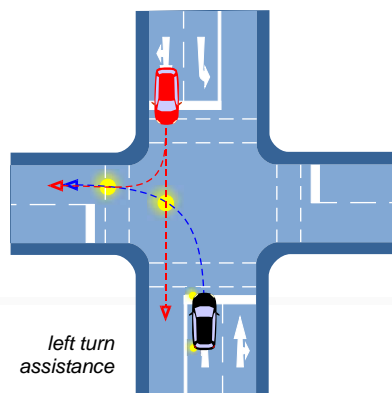
# GENEVA

## Final Demonstration Event

22. November 2011 - in Wolfsburg / Germany



URBAN ASSIST



### CHALLENGES

The challenges for both applications are **integrity** of the localisation as well as the validity of the mapping data.

For safety relevant systems only a very **low false alarm rate** is tolerated. If a sufficiently low false alarm rate can not be guaranteed, no actuator intervention would be tolerated by the customers and the potential for safety enhancement is reduced.

Satellite Navigation, environment perception, and the underlying digital maps are important elements in the GENEVA system architecture to meet the requirements of the targeted **advanced driver assistance** application.

### BENEFITS

The main benefits of GENEVA therefore are

- ▶ driver support in standard situations to **improve safety** before or when entering a critical situation
- ▶ development of a scalable, inexpensive **high accuracy** positioning system for urban environment with built-in integrity monitoring
- ▶ enrichment of **map technologies** for attributes needed for safety relevant driver assistance systems
- ▶ development of algorithms to verify attributed maps with sensors for **environment perception**
- ▶ development of algorithms to verify calibration of sensors for environment perception



VOLKSWAGEN  
AKTIENGESELLSCHAFT

TOMTOM



NavCert

TeleConsult  
AUSTRIA

Fraunhofer  
IIS

INSTITUT DE  
GEOMÀTICA

The  
4 2 5  
Company Ltd

## GENEVA

**Final Demonstration Event**  
22. November 2011 - in Wolfsburg / Germany



URBAN ASSIST

### AGENDA

- 09:00 Welcome & Introduction
- Presentation of GENEVA Project
- Technical Overview (Receiver, Server, Map, Vehicle)
- Presentation of Application "Urban Assist"
- Briefing & Instructions for Live Demonstration
- Live Demonstration
- 15:00 Debriefing / Discussion

### LOCATION

Mobile Life Campus  
Hermann-Münch-Str. 1  
38440 Wolfsburg / Germany

reply by email or fax

YES, I will attend the event!

No, I can not attend.

Send me information and outcomes of the GENEVA demonstration.

\_\_\_\_\_  
surname, name

\_\_\_\_\_  
company

\_\_\_\_\_  
address

\_\_\_\_\_  
phone number

\_\_\_\_\_  
e-mail

\_\_\_\_\_  
date

\_\_\_\_\_  
signature



### Contact

Mr. Andreas Kahmann  
tel: +49-531-35444-37  
fax: +49-531-35444-16  
geneva@oecon-line.de